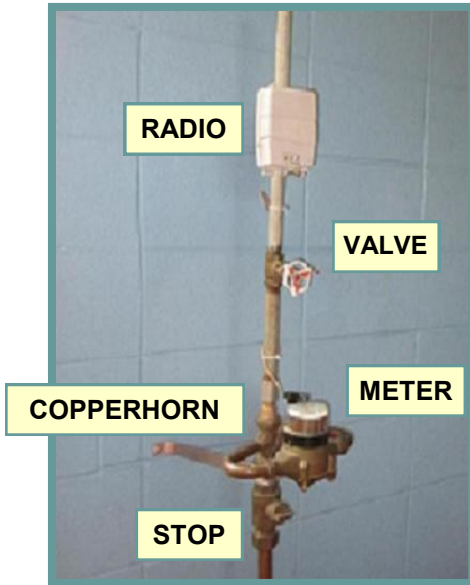


Delivering Your Water



The Utility delivers safe water through pipes in the street.

The pressure in those main water pipes forces water into a smaller line called a Property Service. You own the Property Service. It is located about 6 feet underground (to keep it from freezing).

The water enters your house, passes through the Stop, the Copperhorn, the Meter, the Valve, and to the faucet that you have turned on.

You own all the plumbing from the Curbstop through your house, except for the water meter and the radio.

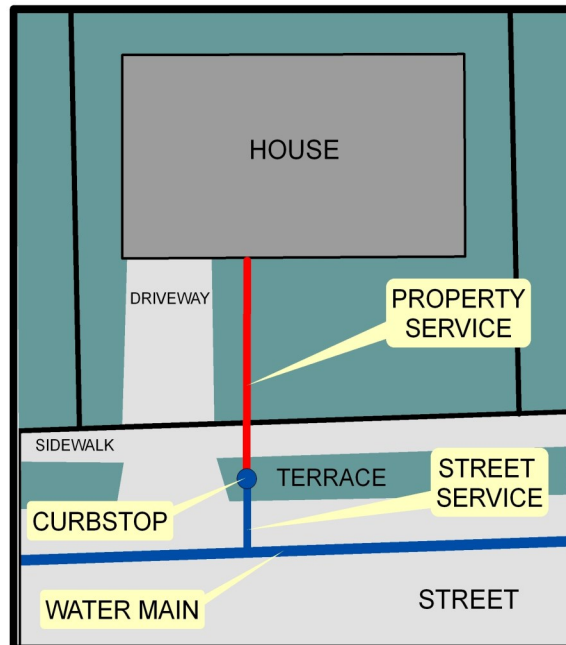
To ensure the meter is accurate, the Public Service Commission (PSC) requires us to replace it every 20 years.

Our service crew replaces meters, free of charge, on weekdays, from 7:15 am to 2:45 pm. It takes about 45 to 60 minutes.

Since you are responsible for the proper operation of the Stop and the Valve, we ask that you open and close them a couple of times before our crew arrives.

If, before they begin replacing your meter, our crew notices a leak between the Copperhorn and the Stop, they may offer to fix the leak. You will be charged for this service.

Except for the radio, our crew is not authorized to work on anything above the Copperhorn.



NOTE: THE WATER UTILITY OWNS EVERYTHING IN BLUE

It's Good to Know . . .

- **Water softeners** run best when they are set to match our local water conditions.

Alkalinity	216 - 323 mg/L
pH	6.81 - 7.46
Hardness	18 - 30 grains/gal
Iron	0.14 - 0.21 mg/L
TDS	389 - 538 mg/L
- **Digger's Hotline** is called to mark the location of Utility property in the street. They do not mark the location of the Property Service. They can be reached at 1 800 242 8511.
- **Radios** transmit meter readings. They have not been found to interfere with medical devices.
- **Cross connection** hazards occur when contamination gets drawn into your water. A common source of contamination is a garden hose. Protect yourself by installing back flow preventers.
- **Water Sprinkling** is restricted between May 1st and October 1st.

Even Address	— Thurs & Sun
Odd Address	— Tues & Sat

Sprinkle before 9 am or after 5 pm.
- **A toilet leak** the size of a pencil lead wastes water and can increase your water and sewer bill by \$200.00 per quarter.